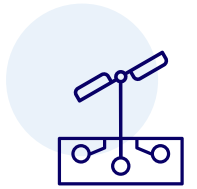




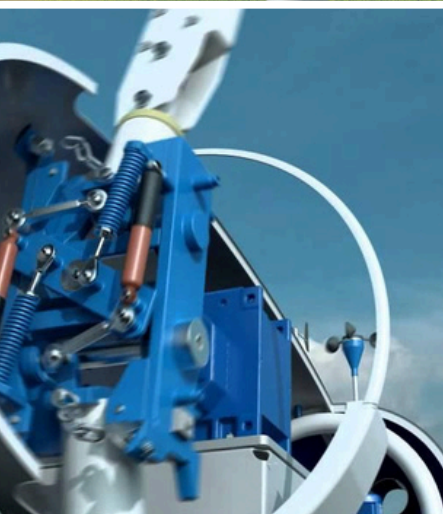
WES250

# Large wind turbines for high energy demands.



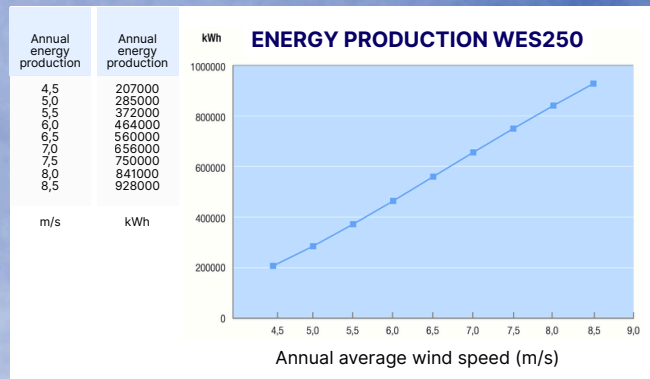
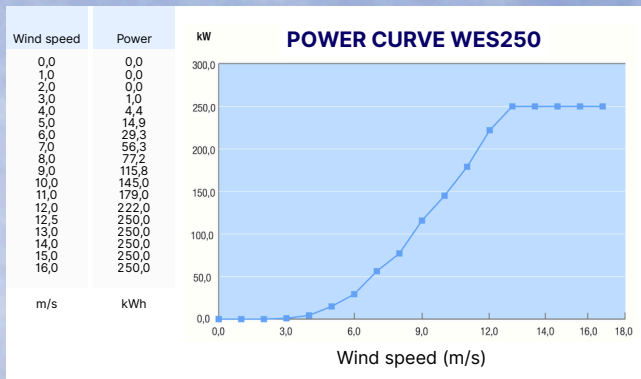
The WES250 is a two-bladed, powerful, reliable 250 kW-class wind turbine with a rotor diameter of 30 meters.

Whether you run a flower farm, a large agricultural enterprise, or an SME with consistent energy needs, **the WES250 wind turbine** is built to deliver.



**ECOWAYS**

# TECHNICAL SPECIFICATIONS



## GENERAL INFORMATION

Life expectancy: > 20 years  
 Rated power: 250 kW  
 Minimum wind speed: > 3 m/s  
 Cut-out wind speed: 22 m/s  
 Design wind speed: 13 m/s  
 Critical wind speed: 60 m/s  
 Wind turbine class: II  
 Yaw system: actively controlled  
 Passive power control: blade pitch adjustment  
 Active power control: fully variable IGBT system  
 Mast height: 30m, 39m, 48m  
 Number of blades: 2  
 Rotor diameter: 30 m  
 Noise level at 8 m/s: 45 dB(A), at 100m distance  
 Temperature range: from -20°C to +40°C

## ELECTRIC

Power: 250 kW  
 Voltage: 380 - 500V / 50 - 60Hz, 3 P+N  
 Connection: grid-connected  
 Inverter: back-to-back (IGBT)

## MATERIAL SPECIFICATIONS

Blades: fiberglass-reinforced epoxy resin  
 Nacelle: steel  
 Cover: polyester  
 Mast: galvanized steel  
 Foundation: concrete block with anchor

## WEIGHT

Blade incl. mounting: 110 kg per blade  
 Rotor: 900 kg  
 Nacelle incl. rotor and blades: 3.300 kg

## MAIN PARTS

Generator: ABB  
 Control cabinet: Siemens  
 Inverter: Control Techniques (Emerson)

## STANDARDS

Protection rating: IP55  
 Complies with: NEN1010 (electrical), EN50308 (safety), EN6096 (rotating components), UI1741, G59/2 (anti-islanding), IEC61346-2000 (cabinet)  
 CE marking: yes

## Contact

+31 (0) 88 2522900  
 molenaars@ecoways.nl  
 ecoways.com

