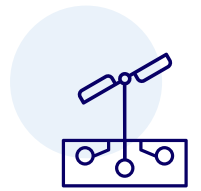




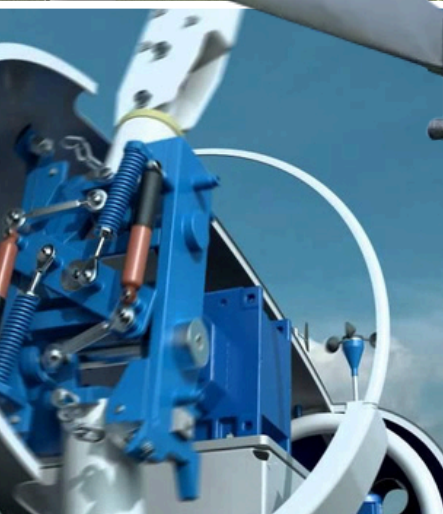
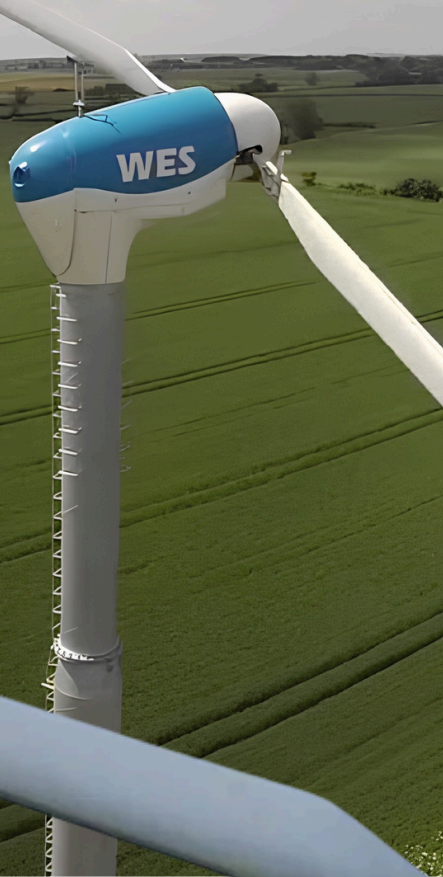
WES80

Large wind turbines for high energy demands.



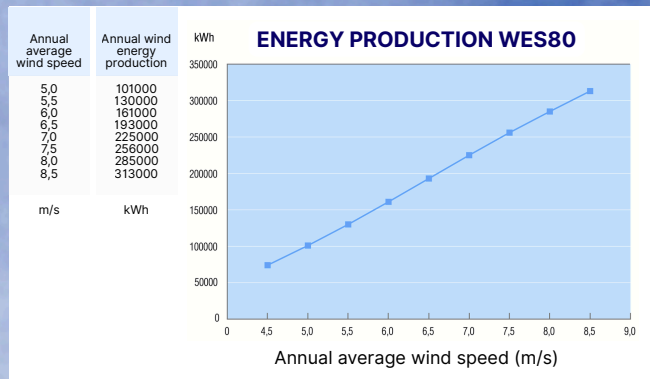
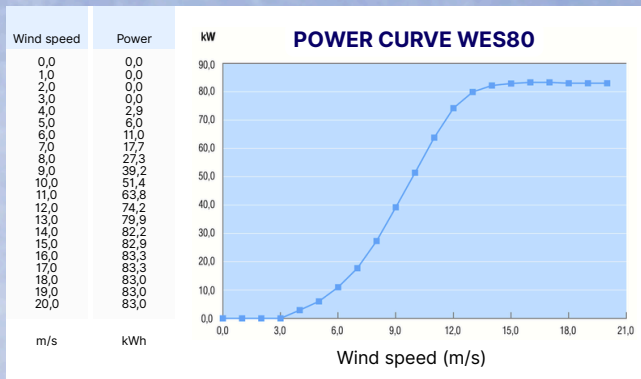
The WES80 is a two-bladed, powerful, reliable 80 kW-class wind turbine with a rotor diameter of 18 meters.

Whether you run a flower farm, a large agricultural enterprise, or an SME with consistent energy needs, the **WES80 wind turbine** is built to deliver.



ECOWAYS

TECHNICAL SPECIFICATIONS



GENERAL INFORMATION

Life expectancy:	> 20 years
Rated power:	80 kW
Minimum wind speed:	> 3 m/s
Cut-out wind speed:	22 m/s
Design wind speed:	13 m/s
Critical wind speed:	60 m/s
Wind turbine class:	II
Yaw system:	actively controlled
Passive power control:	blade pitch adjustment
Active power control:	fully variable IGBT system
Mast height:	18m, 24m, 30m
Number of blades:	2
Rotor diameter:	18 m
Noise level at 8 m/s:	45 dB(A), at 100m distance
Temperature range:	from -20°C to +40°C

ELECTRIC

Power:	83 kW
Voltage:	380 - 500V / 50 - 60Hz, 3 P+N
Connection:	grid-connected
Inverter:	back-to-back (IGBT)

MATERIAL SPECIFICATIONS

Blades:	fiberglass-reinforced epoxy resin
Nacelle:	steel
Cover:	polyester
Mast:	galvanized steel
Foundation:	concrete block with anchor

WEIGHT

Blade incl. mounting:	110 kg per blade
Rotor:	900 kg
Nacelle incl. rotor and blades:	3.300 kg

MAIN PARTS

Generator:	ABB
Control cabinet:	Siemens
Inverter:	Control Techniques (Emerson)

STANDARDS

Protection rating:	IP55
Complies with:	NEN1010 (electrical), EN50308 (safety), EN6096 (rotating components), UI1741, G59/2 (anti-islanding), IEC61346-2000 (cabinet)
CE marking:	yes

Contact

+31 (0) 88 2522900
 molenaars@ecoways.nl
 ecoways.com

ECOWAYS

